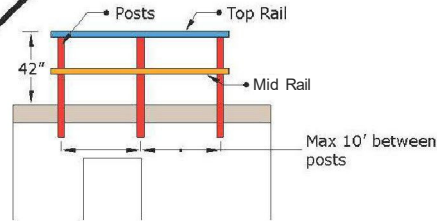
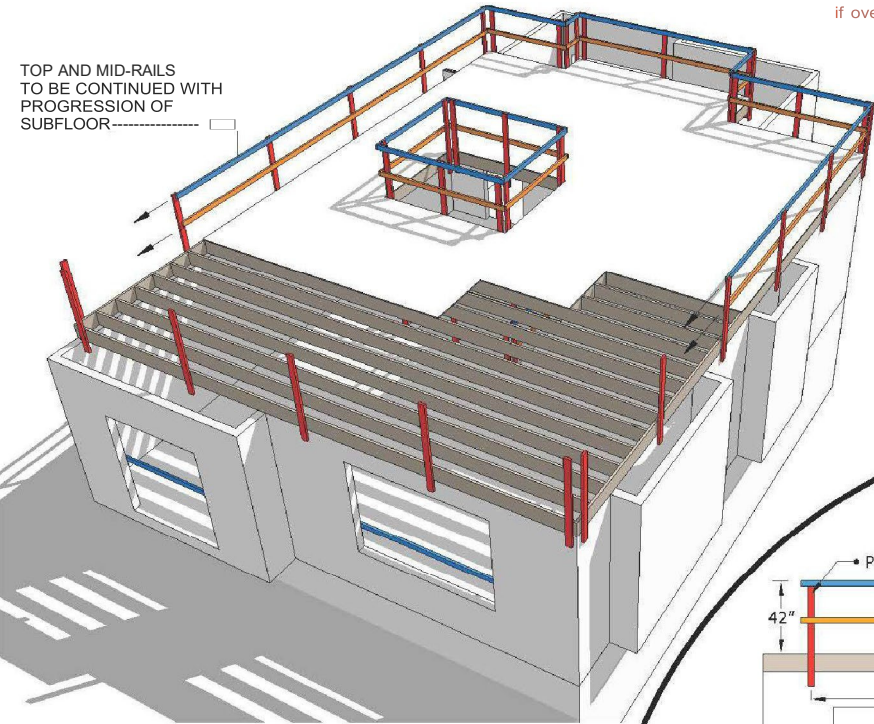


**\*\*IMPORTANT-**  
 Toe boards are required around the stairwell opening guardrail system if overhead hazards are present below

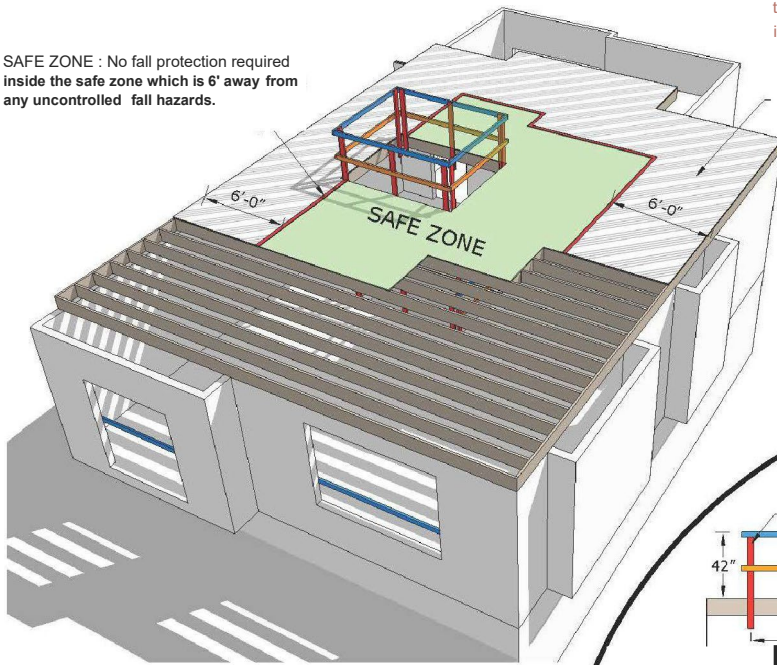


**OPTION 1: GUARDRAILS**

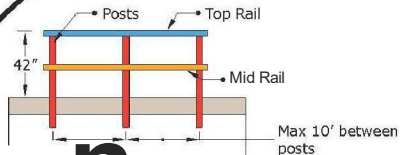
**Guard Rail Diagram**

**.. IMPORTANT..**  
 Toeboards are required around the stairwell opening guardrail system if overhead hazards are present below

**SAFE ZONE :** No fall protection required inside the safe zone which is 6' away from any uncontrolled fall hazards.



**CONTROL ZONE**  
 Personal Fall Protection Required



**OPTION 2: CONTROL ZONE**  
 With Personal Fall Protection

**Guard Rail Diagram**